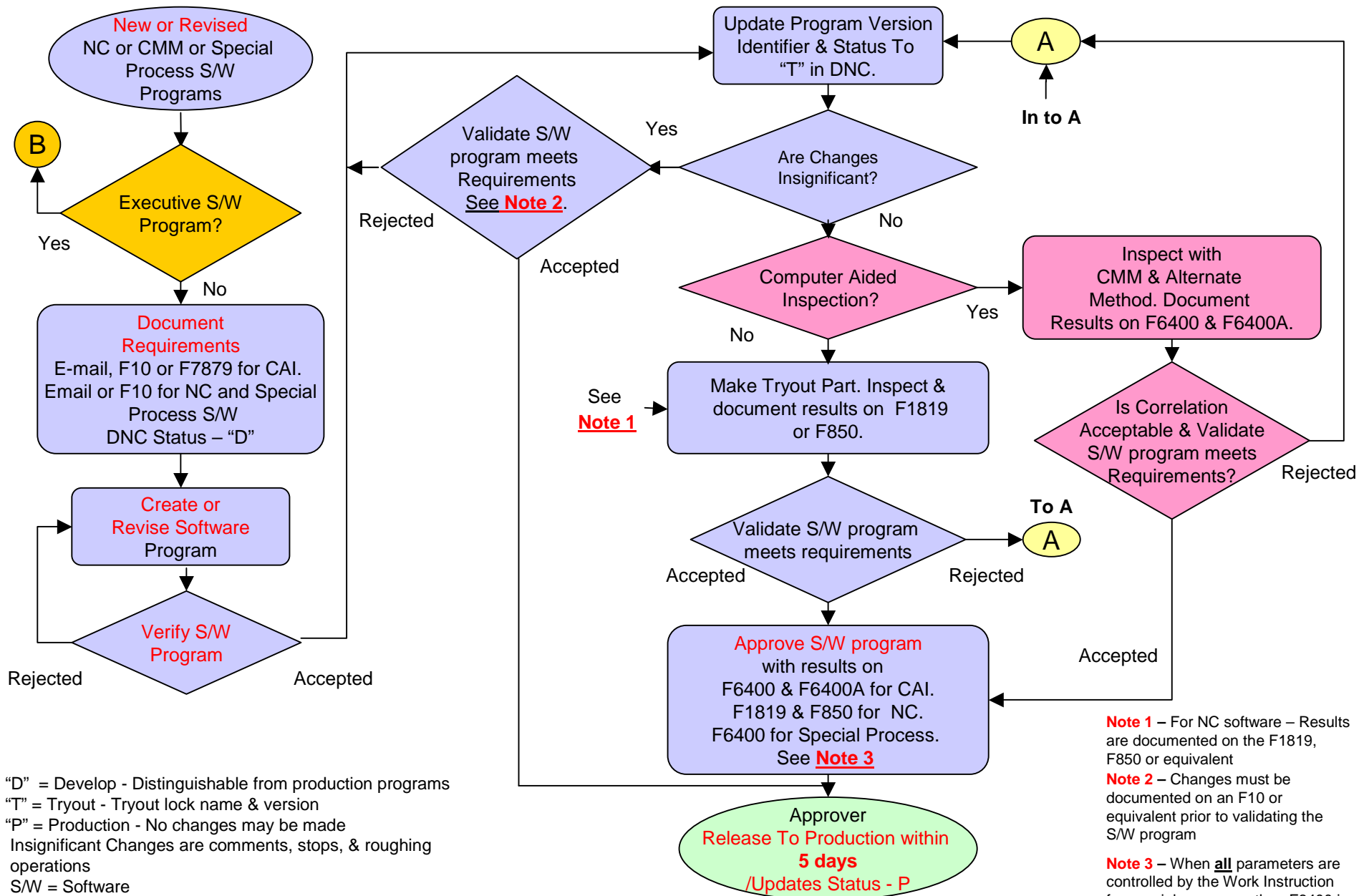


# NC, CAI, Special Process and Executive Software Standard Work Process Flow

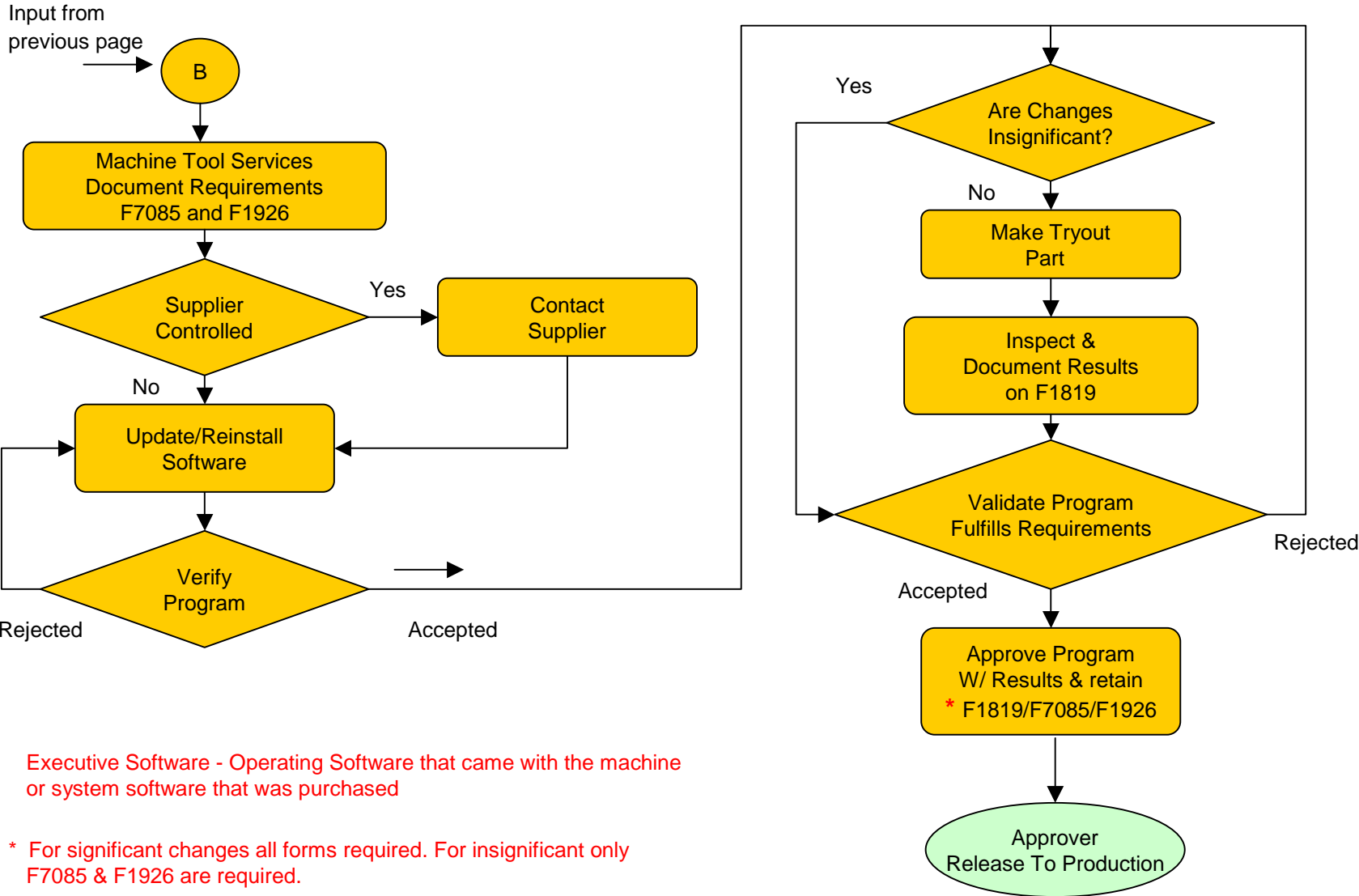


"D" = Develop - Distinguishable from production programs  
 "T" = Tryout - Tryout lock name & version  
 "P" = Production - No changes may be made  
 Insignificant Changes are comments, stops, & roughing operations  
 S/W = Software

OVER

- Note 1** – For NC software – Results are documented on the F1819, F850 or equivalent
- Note 2** – Changes must be documented on an F10 or equivalent prior to validating the S/W program
- Note 3** – When **all** parameters are controlled by the Work Instruction for special processes then F6400 is not required.

# Executive Software Standard Work Process Flow



Executive Software - Operating Software that came with the machine or system software that was purchased

\* For significant changes all forms required. For insignificant only F7085 & F1926 are required.

OVER